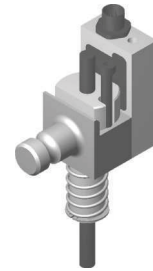


Part Probe Sensor Assembly

SPS11194-01
SPS11195-01



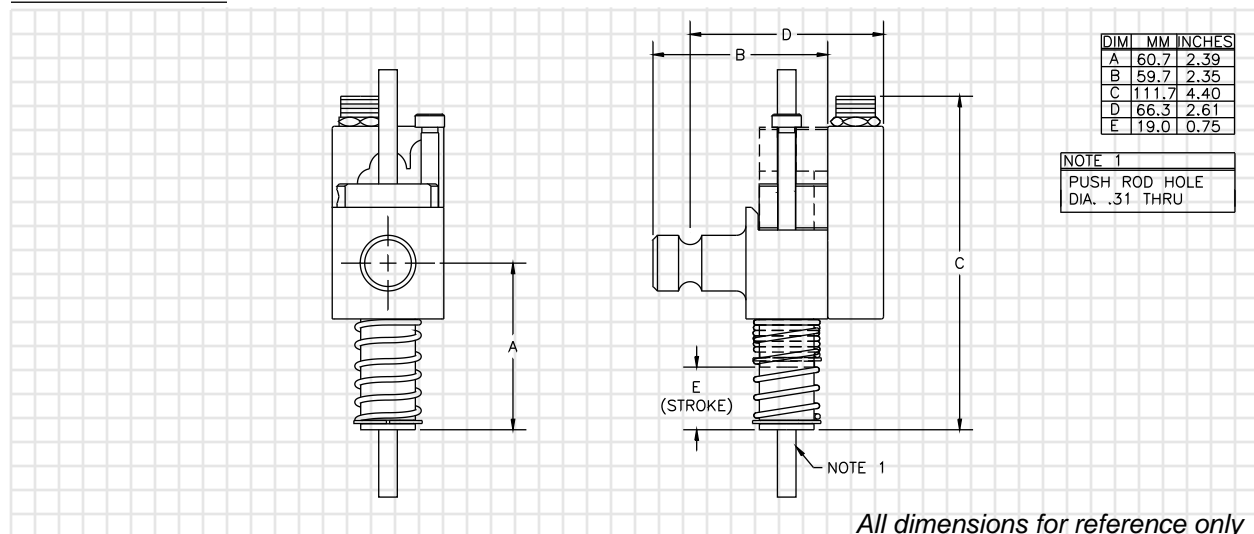
Order Information:

Catalog #	Supply Voltage	Switch Type	Weight
SPS11194-01	10-30V DC	PNP (current sourcing)	513 grams
SPS11195-01	10-30V DC	NPN (current sinking)	513 grams

Features:

- Mechanical interface for part present sensing.
- Allows for simple adjustment to part edges.
- LED for on/off status of sensor.
- Interface directly to programmable controllers.
- Furnished with 4-pin 12mm (micro type) single key connector.

Technical Data:



● Power/Sensor connector:	4-pin 12mm (micro type), single key connector
● Supply voltage range:	10VDC to 30VDC
● Operating temperature range:	0° C to +60° C
● Response time:	25ms
● Indicator light:	RED: on when target is detected
● Short circuit protection:	Yes (self resetting)
● Overload protection:	Yes
● Reverse voltage protection:	Up to 40VDC

Application:

- Material Handling Systems where conveyors transfer and release sheet metal against end stops.
- Ejection control.
- Fixtures.

Cable:

- SCE12062
2 meter (6 feet) Extension cable
- SCF12060
2 meter (6 feet) Power cable

All technical data subject to change without notice



Syro-Link™ System